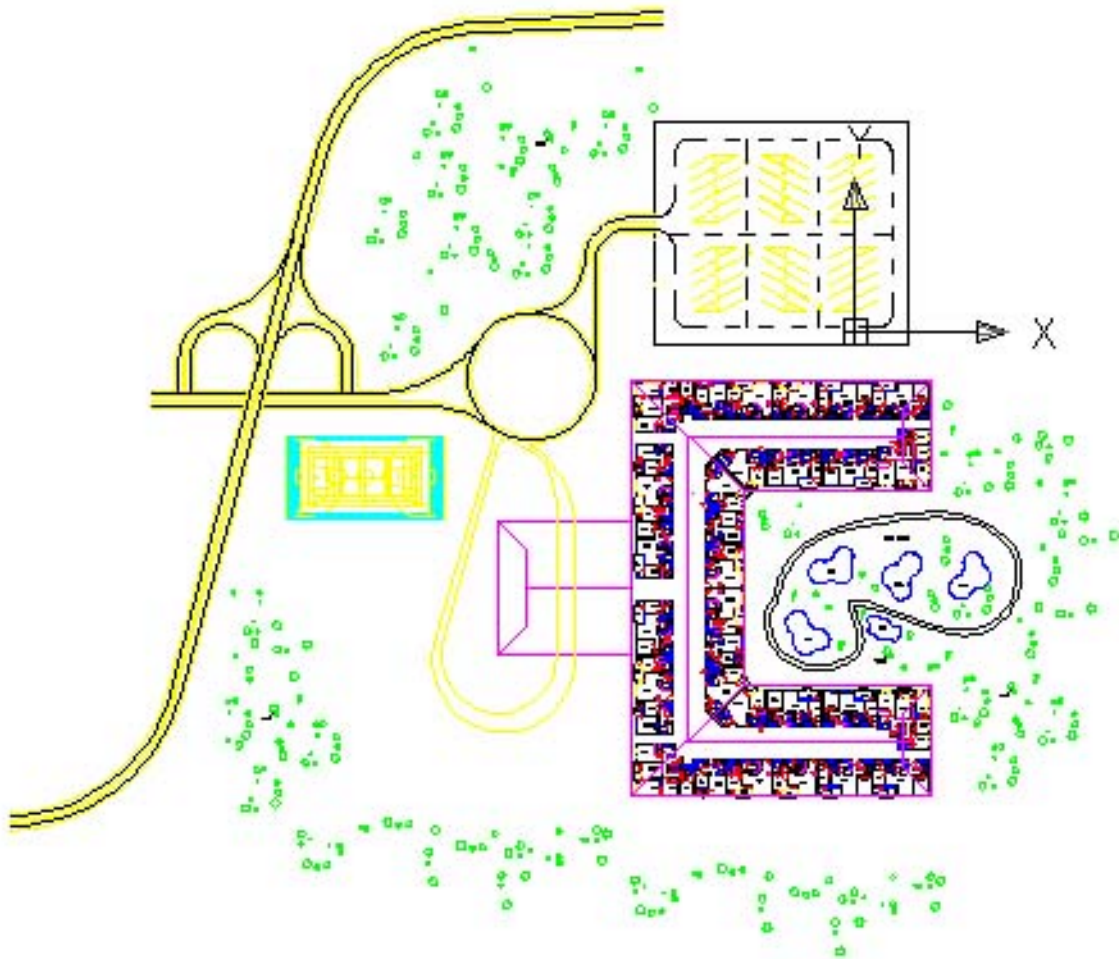


Welcome To The Future



Welcome to: **GlenPlex**, an Innovative Solution to Living Arrangements

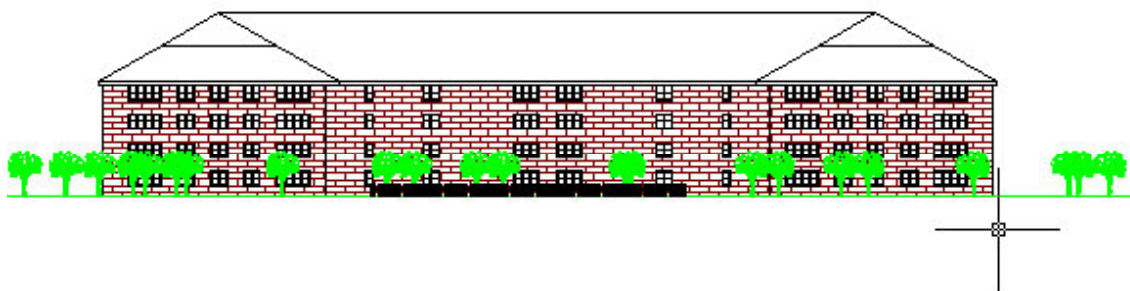


Table of Contents

Project Information

The Company.....	2
The Problem/Solution.....	3
Team Members/Contributions.....	4

Individual Units

Unit 1.....	5
Unit 2.....	6
Unit 3.....	7
Unit 4.....	8
Unit 5.....	9

Apartment Complex

Overview.....	10
Complex Overview.....	11
Front View.....	12
Basketball Court.....	13
Parking Lot.....	14
Pool Area.....	15
Pool Dimensions.....	16
Project Notes.....	17

Glen Bradford and Associates

We are a Full Service **CAD** Design and Drafting Company specializing in all areas of design for companies or individuals.

We provide design and drafting services free of charge in the effort to achieve the best grades possible, presumably A+.

We work directly with your engineering /architectural or design team in accordance with your company's design standards. This insures the compatibility of our file system with yours.

Is your design department overloaded? Relax, let us help you get your project back on track to meet your deadlines. We specialize in design and drafting overflow.

No design department? No problem, we also contract with professional engineering and architectural consultants to ensure that the design that is produced is as professional as possible.

We can even expedite your products into production by working in a project management capacity with your manufacturer.

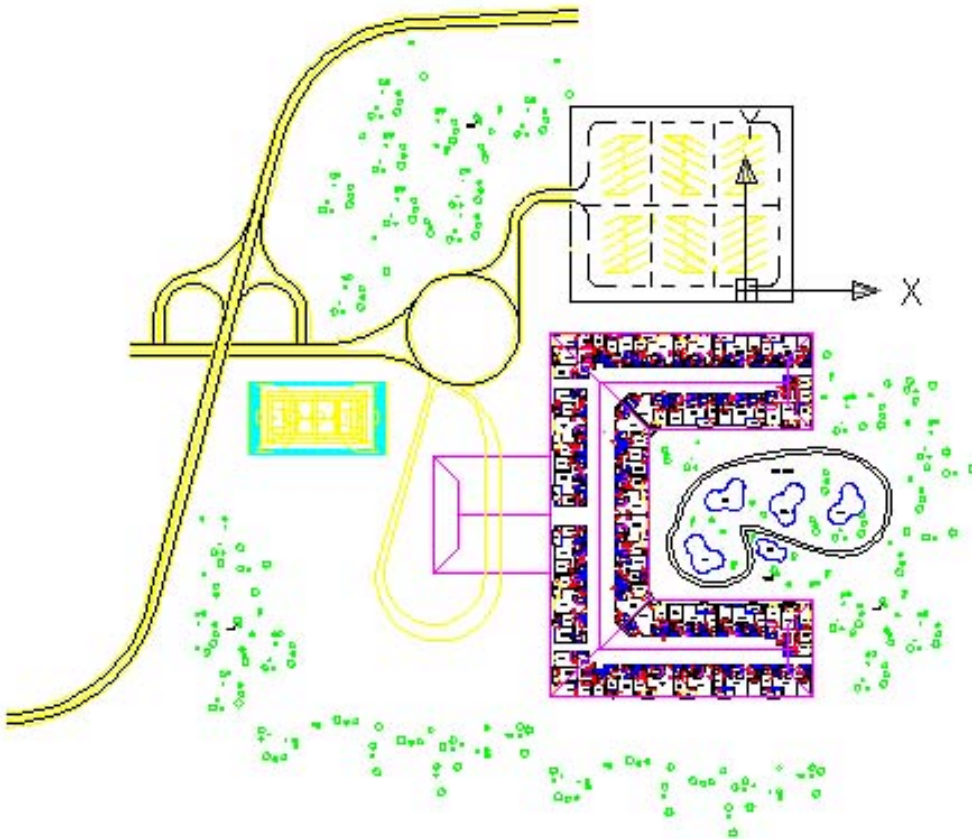
Finished designs can be supplied in the following forms (or combinations).
Hard Copy, Floppy Disk, Zip Disk, CD or E-mail.

The Problem

Here at Purdue, there is definitely a shortage of upper class living arrangements. This shortage definitely limits an opportunity for Purdue to gain extra revenue from those willing to pay for it. As long as the world has wealthy people on it, there will always be the few that will be willing to pay extra for all the extra living arrangements. If Purdue were to build a relatively nice apartment complex, the revenues off of this complex could be used for a variety of purposes, even to maintain other campus buildings. Therefore, we need to build a very sophisticated apartment complex that will appeal to the wealthy.

The Solution

Welcome
to
G
L
E
N
P
L
E
X



Team Members and Contributions

Group Work

Name	Responsibility	Time Required to Draw Unit
Ian Green	Unit 1	3:52:41
Glen Bradford	Unit 2	2:55:07
Steve Marmaras	Unit 3	3:45:56
Brandon Moore	Unit 4	6:30:00
Paul Lojkutz	Unit 5	1:59:02

Individual Contributions

Standardizing These Units: 1:04:06

Designing Apartment Complex: 9:46:04

Putting Apartment Complex into Paperspace: 1:14:05

Finalizing the Report: 5:08:05

Total Time: 36:13

General Project Notes:

All the windows are 5 feet tall and are 2 foot 9 and 5/8 inches wide.

This uniformity allows for the overall simplification of the building process and a neater and more professional look upon completion of the complex.

The basketball court is a standard basketball court and has 10-foot high adjustable basketball hoops.

The pool area currently has 4 pools; each of the pools is the same.

The pond that was created is rough and its dimensions are not important, but it serves as a drainage ditch for the building.

The trees should be placed in accordance with where they can be dug without dealing with buried piping and cables.

The white picket fence around the pool area is a standard white picket fence that should be purchased based on pricing and reliability.